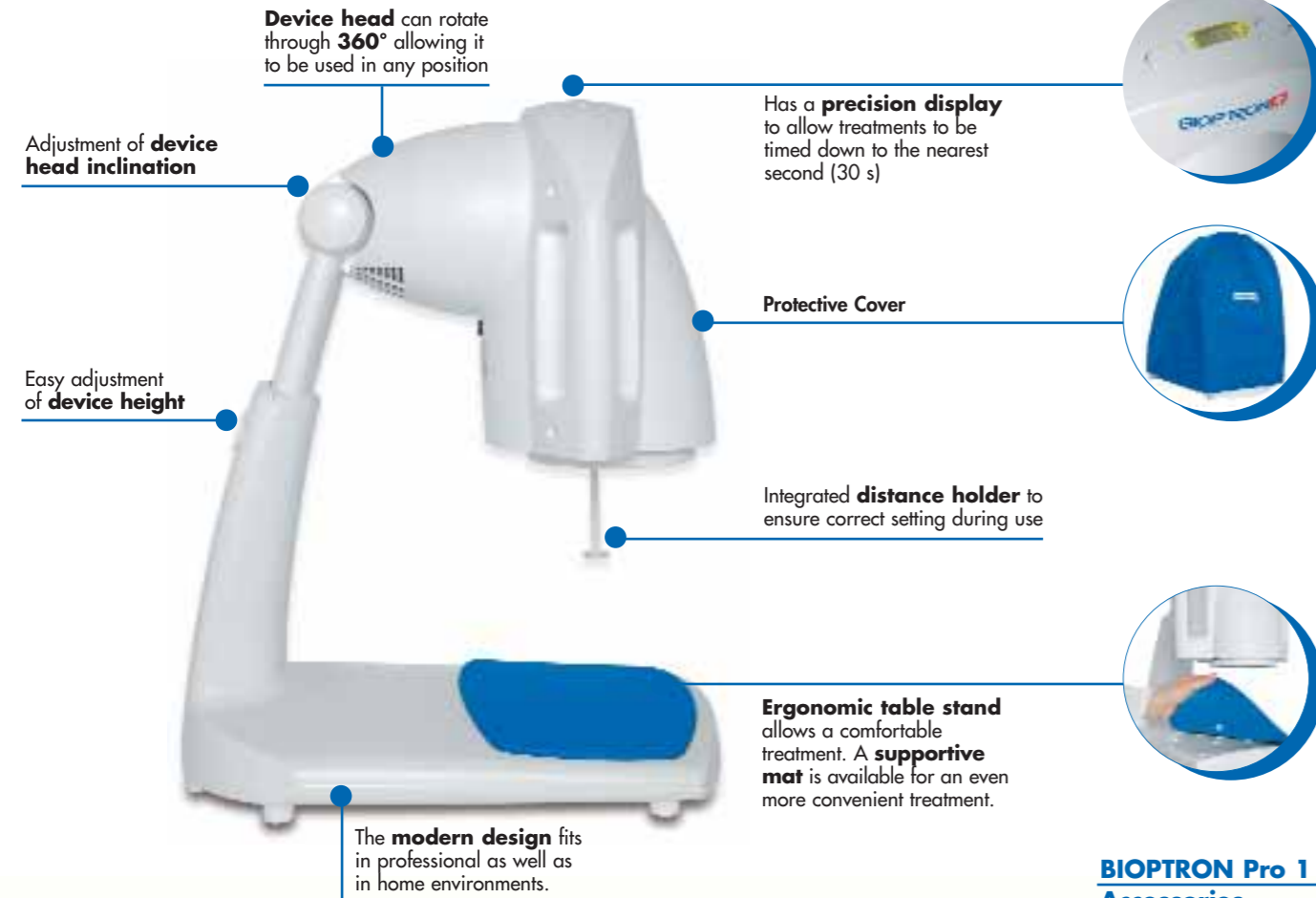


## BIOPTRON Pro 1 - SPECIAL FEATURES

Elegant and modern design ensures the BIOPTRON Pro 1 will suit any home



### BIOPTRON Pro 1 Accessories

Color Therapy Filters



### BIOPTRON Pro 1 Technical Data

• <b>Power supply</b>	100-240 V~, 50/60 Hz
• <b>Power consumption</b>	160 VA
• <b>Rated power of halogen</b>	50 W
• <b>Protective class</b>	Class II□, IP 20
• <b>Device Type</b>	Type B *
• <b>Weight</b>	with table stand 3.4 kg with floor stand 7.8 kg
• <b>Ambient temperatures</b>	
- Operation	from + 10°C to + 40°C
- Storage	from + 5°C to + 45°C
• <b>Wavelength</b>	480-3400 nm
• <b>Degree of polarization</b>	> 95% (590-1550 nm)
• <b>Specific power density</b>	av. 40 mW/cm <sup>2</sup>
• <b>Light energy per minute</b>	av. 2.4 Joule/cm <sup>2</sup>
• <b>CE Labelling</b>	CE 0124

Convenient and easily adjustable floor stand: **easy adjustment of height and arm length** allows **precise and user-friendly** positioning for the treatment of all **parts of the body**.



## SHED LIGHT ON THE PAIN!



© COPYRIGHT ZEPTER HOLDING - Printed in Italy, 2006 - Code PMB-306-06-EN - Art Work: BRID MARKETING - ITALY

## BIOPTRON Pro 1

APPROVED AS A MEDICAL DEVICE  
IN EU (93/42/EEC)



**BIOPTRON**   
LIGHT THERAPY SYSTEM By Zepter Group

BIOPTRON AG is a Swiss company that specialises in the field of light therapy.



For further information, please contact  
BIOPTRON AG - Light Therapy System,  
Sihleggstrasse 23, CH-8832 Wollerau, Switzerland.  
light@bioptron.com - www.bioptron.com

  
INTERNATIONAL  
MEDICAL  
www.zepter.com

  
INTERNATIONAL  
MEDICAL

**BIOPTRON**   
LIGHT THERAPY SYSTEM By Zepter Group

## BIOPTRON LIGHT THERAPY

**BIOPTRON Light Therapy** is an exciting and innovative technology that offers **cost-effective treatment** for a variety of medical conditions, and can be used **in the comfort of your own home.**

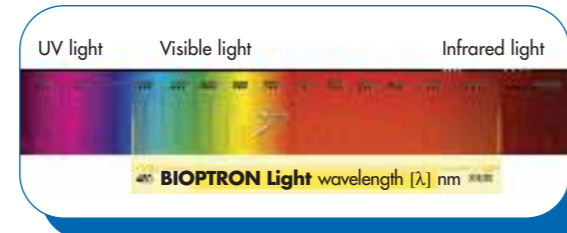
The **BIOPTRON Light Therapy System** optical devices are emitting a distinctive type of light, which focuses on the favourable features of natural sunlight without ultraviolet radiation and its potential harmful effects.



### Light Therapy

Light has been used to promote healing since ancient times and nowadays light therapy is used as a successful treatment in modern medicine.

In more recent times, scientists have identified certain properties of **sunlight** that are believed to have **beneficial effects** on the human body. Technology engineered to re-create these properties is present in **BIOPTRON's** Light Therapy System. Today modern technology allows to combine these natural properties with technical modifications in gentle and effective **BIOPTRON Light Therapy System.**



### How does BIOPTRON Light Therapy work?

When the **BIOPTRON** device is held over the skin surface, energy from the emitted **light penetrates the underlying layers.** This causes **biological reactions** to occur within the various tissues (skin, muscle, blood vessels, nerves, etc.).

Due to biostimulative effects of **BIOPTRON** Light when applied on the skin, it stimulates light-sensitive intracellular structures and molecules.

**BIOPTRON** Light Therapy acts in a natural way by supporting the regenerative capacity of the body and therefore helps the body to release its own healing potential.

#### The main effects of BIOPTRON Light Therapy are:

- **Pain reduction**
- **Promotion of tissue repair and regeneration** (wound healing)

#### BIOPTRON Light Therapy can:

- **Improve** microcirculation
- **Harmonize** metabolic processes
- **Reinforce** the human defence system
- **Stimulate** regenerative and reparative processes of the entire organism

### What are the benefits of BIOPTRON Light Therapy?

#### The special characteristics of BIOPTRON Light allows:

- **Optimal penetration** of light through the surface of the skin
- **No damage** to the skin and underlying tissue
- **No known negative side effects**

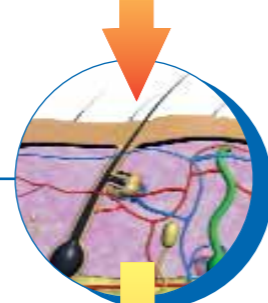
#### BIOPTRON Light Therapy:

- **Flexible:** The device can be used on various parts of the body surface
- **Fast:** Each treatment session lasts for only 4-10 minutes
- **Simple:** The device is easy to set up and effortless to use
- **Comfortable:** Light therapy is painless and can be enjoyed in your own home

#### BIOPTRON Light



#### Skin Layers



#### The Cell



## HOW CAN BIOPTRON LIGHT THERAPY HELP YOU?

### BIOPTRON Pro 1 can be used as a complementary treatment for a variety of common conditions

#### Pain relief

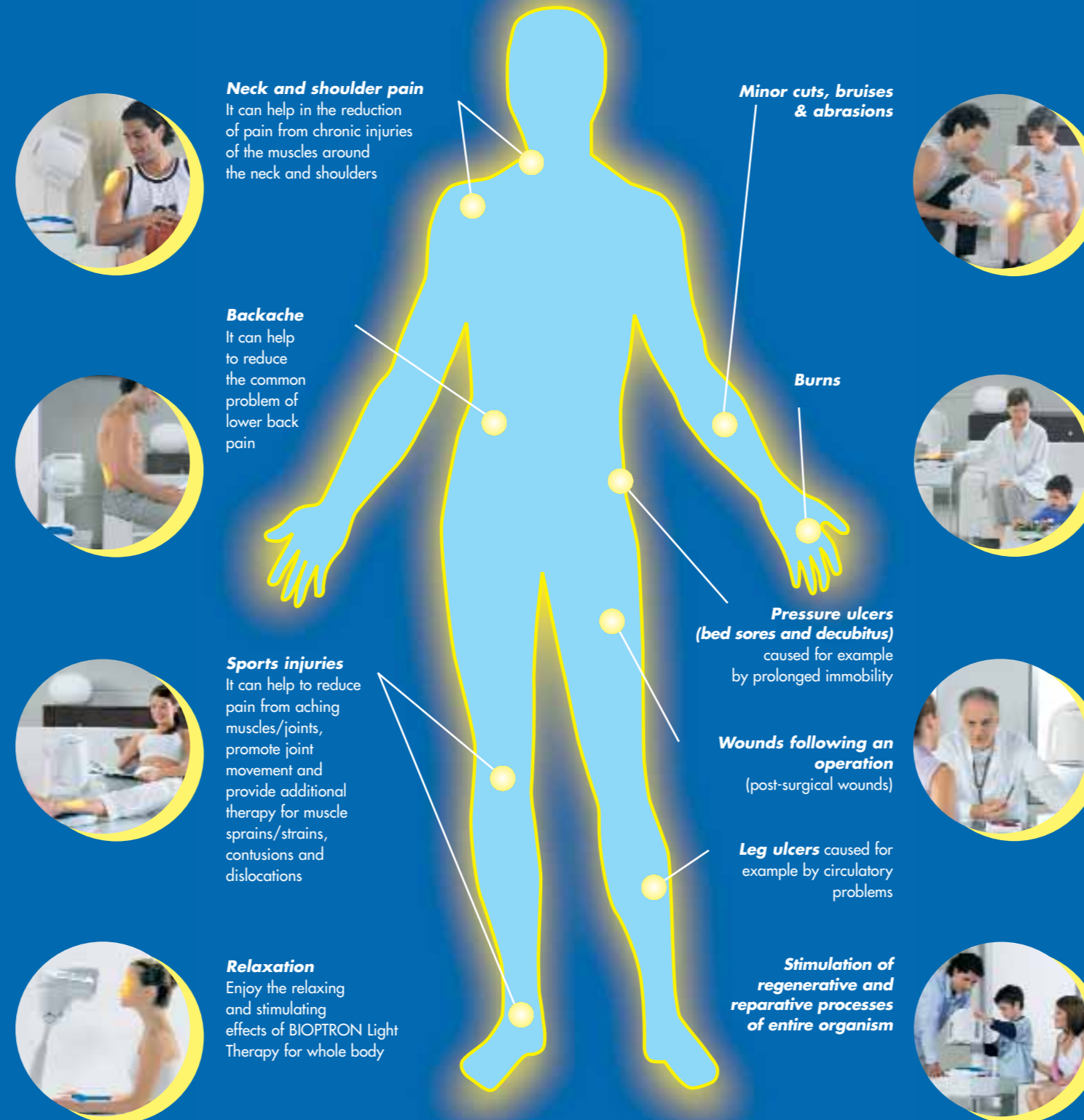
It can help to reduce the severity of symptoms in **Rheumatology, Physiotherapy and Sports Medicine:**

- Relieve pain or decrease its intensity
- Strengthen muscles and restore range of movement

#### Wound healing

It can help to promote wound healing by:

- Encouraging the **growth of cells**
- Encouraging the **closure of wounds**
- Encouraging a **better quality of scar tissue**



**BIOPTRON Light can be applied to any part of the body**  
Examples of possible applications are shown in the figure

## THE LIGHT WHICH TURNS AROUND YOUR NEEDS

### Use

#### Who can use the BIOPTRON Pro 1?

**Everyone.** Light Therapy using the **BIOPTRON Pro 1** can be used by men and women of all age groups. Light therapy may help younger people with the **healing of minor cuts/bruises**, as well as in the recovery from **sports injuries.** Older men and women may find light therapy helps in easing pain from various **joint/muscle conditions (e.g. backache, neck/shoulder pain, rheumatism).**

#### Is the BIOPTRON Pro 1 easy to use?

**Yes.** The **BIOPTRON Pro 1** has been specifically designed to make it simple to use. It is easy to set up and needs only minimal assembly.

#### Can I treat any part of my body using the BIOPTRON Pro 1?

**Yes.** The **BIOPTRON Pro 1** is **easily adjustable** for optimum positioning over any part of the body surface.

#### How long should each BIOPTRON Light Therapy session be?

**BIOPTRON** Light Therapy should be adapted for each individual user. The duration of your treatment session (and of your entire treatment course) depends primarily on your specific health problem and the body area to be treated. In general, **BIOPTRON** Light Therapy should be applied **once or twice each day** (e.g. every morning and/or evening) **for 4 to 10 minutes**, or according to the **instructions of your physician.**

### Safety

#### Should I see my doctor before I use the BIOPTRON Pro 1?

Depending on your condition we recommend that you consult with a physician before using **BIOPTRON** Light Therapy, to determine whether this treatment is suitable for you or whether you require alternative medical treatment.

#### Does BIOPTRON Light Therapy have any side effects?

There are **no known adverse side effects** of **BIOPTRON** Light Therapy. Nevertheless, we recommend that pregnant women consult their physician before starting light therapy.

#### Can I use the BIOPTRON Pro 1 if I am taking medication?

To date, light therapy using the **BIOPTRON Pro 1** is not known to have **any interactions with medication.**

